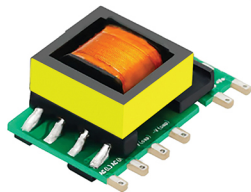


RHENXY

Your Vision, Our Solutions

AC-DC CATALOG



ABOUT COMPANY

RHENXV is a Bangalore-based power electronics company specializing in AC/DC and DC/DC converters. We cater to a wide spectrum of industries including Medical, Electric Vehicles, Renewable Energy, IoT, Telecom, Railways, and more.



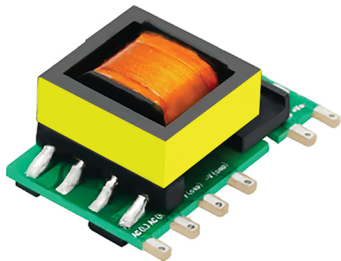
Driven by a commitment to quality, affordability, and fast delivery, RHENXV is focused on providing reliable power conversion solutions that meet the evolving demands of advanced technology applications.

Our products are engineered for performance, safety, and long-term durability—delivering consistent value across diverse and mission-critical environments.

At RHENXV,
we believe power should be precise,
dependable, and accessible—
and we're proud to be a
trusted partner in powering the future.

AC-DC CATALOG

- ▶ ACS_V SERIES
- ▶ ACE_V SERIES
- ▶ ACE_VM SERIES
- ▶ ACE_VMRC SERIES
- ▶ ACE_VMST(D) SERIES



ACS_V SERIES



ACE_V SERIES



ACE_VM SERIES



ACE_VMST(D) SERIES

ACS5W_V SERIES

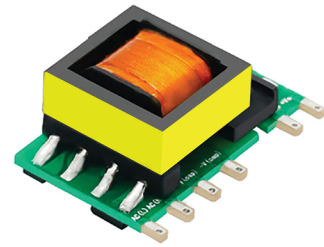
FEATURES

The ACS5W_V series is an efficient modular power supply for miniaturized bare boards. This model of power supply has advantages such as wide input voltage range, high reliability, low power consumption, and safe isolation. Widely applicable to industrial control, power instruments, smart homes, and other occasions that require strict volume requirements and low EMC requirements. If it is necessary to apply in harsh electromagnetic compatibility environments, EMC peripheral circuits must be added.

CE UK RoHS  CA



WARRANTY



MODEL INFORMATION :

Model No.	DC Voltage	Rated Current	Rated Power	Max. Capacitive Load
ACS05W-03V	3.3V	1000mA	3.3W	2200uF
ACS05W-05V	5V	1000mA	5W	1500uF
ACS05W-09V	9V	560mA	5W	680uF
ACS05W-12V	12V	420mA	5W	470uF
ACS05W-15V	15V	340mA	5W	330uF
ACS05W-24V	24V	210mA	5W	100uF

ACS10W_V SERIES

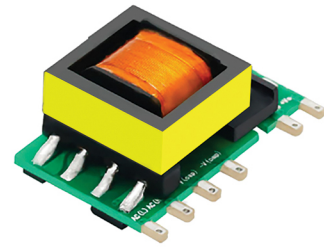
FEATURES

The ACS10W_V series is an efficient modular power supply for miniaturized bare boards. This model of power supply has advantages such as wide input voltage range, high reliability, low power consumption, and safe isolation. Widely applicable to industrial control, power instruments, smart homes, and other occasions that require strict volume requirements and low EMC requirements. If it is necessary to apply in harsh electromagnetic compatibility environments, EMC peripheral circuits must be added.

CE UK RoHS 



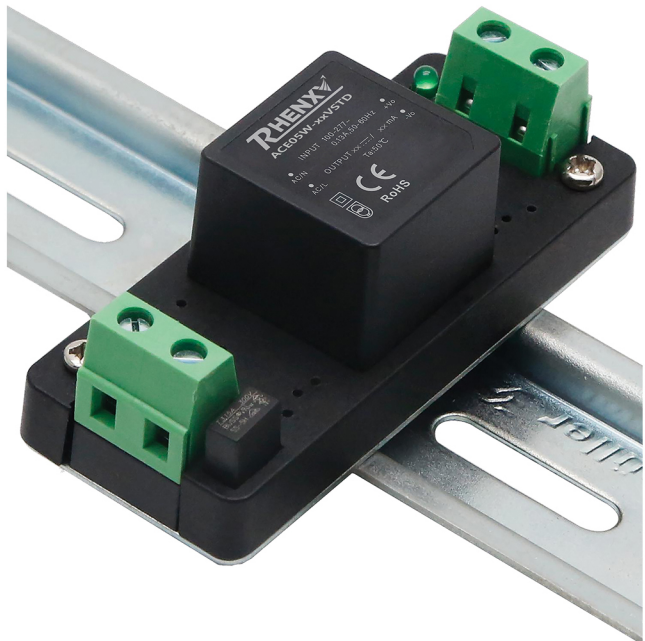
WARRANTY



MODEL INFORMATION :

Model No.	DC Voltage	Rated Current	Rated Power	Max. Capacitive Load
ACS10W-03V	3.3V	2000mA	6.6W	1500uF
ACS10W-05V	5V	2000mA	10W	1500uF
ACS10W-09V	9V	1100mA	10W	1000uF
ACS10W-12V	12V	830mA	10W	680uF
ACS10W-15V	15V	670mA	10W	470uF
ACS10W-24V	24V	420mA	10W	330uF

ACE_V(M/RC)ST(D) SERIES



ACE10W_V SERIES

FEATURES

ACE10W-V series is super small size up to 1.57*1 inch, adopting the full range : 85-305VAC/100-430VDC input. The series has extremely low no-load power consumption High efficiency to reduce power loss.

The series cost-effective, high reliability, operates from -40°C to +85°C. A variety of appearance sizes are available for easy installation and use.

These converters offer excellent EMC performance and meet international standards , they are widely used in areas of industrial design, household appliances, communications, testing instruments.

CE UK CA RoHS 



WARRANTY



MODEL INFORMATION :

Model No.	DC Voltage	Rated Current	Rated Power	Max. Capacitive Load
ACE10W-03V	3.3V	2600mA	8.58W	6600uF
ACE10W-05V	5V	2000mA	10W	5000uF
ACE10W-09V	9V	1100mA	10W	3600uF
ACE10W-12V	12V	830mA	10W	2000uF
ACE10W-15V	15V	660mA	10W	820uF
ACE10W-24V	24V	410mA	10W	470uF

ACE20W_V SERIES

FEATURES

ACE20W_V series is super small size up to 2.07*1.08 inch, adopting the full range : 85-305VAC/100-430VDC input. The series has extremely low no-load power consumption High efficiency to reduce power loss.

The series cost-effective, high reliability, operates from -40°C to +85°C.A variety of appearance sizes are available for easy installation and use.

These converters offer excellent EMC performance and meet international standards, they are widely used in areas of industrial design, household appliances, communications, testing instruments.

CE UK CA RoHS 



WARRANTY



MODEL INFORMATION :

Model No.	DC Voltage	Rated Current	Rated Power	Max. Capacitive Load
ACE20W-03V	3.3V	4500mA	15W	8000uF
ACE20W-05V	5V	4000mA	20W	8000uF
ACE20W-09V	9V	2200mA	20W	5400uF
ACE20W-12V	12V	1670mA	20W	4000uF
ACE20W-15V	15V	1330mA	20W	3000uF
ACE20W-24V	24V	830mA	20W	1000uF

ACE5W_VM SERIES

FEATURES

ACE5W_VM series is a 5W Smaller(46.08*25.78*21.7mm) AC-DC module power supply adopting range : 85-305VAC The series has extremely low no-load power consumption below 0.1W. High efficiency up to 77% to reduce power loss.

The series cost-effective, high reliability, operates from -40°C to +85°C. A variety of appearance sizes are available for easy installation and use.

These converters offer excellent EMC performance and meet international standards, ready to be soldered onto the PCB boards of Industrial design, household appliances, communication equipment, testing instruments and other electronic instruments.

CE UK CA RoHS 



WARRANTY



MODEL INFORMATION :

Model No.	DC Voltage	Rated Current	Rated Power	Max. Capacitive Load
ACE05W-03VM	3.3V	1250mA	4.1W	4000uF
ACE05W-05VM	5V	1000mA	5W	3000uF
ACE05W-12VM	12V	420mA	5W	1200uF
ACE05W-15VM	15V	330mA	5W	680uF
ACE05W-24VM	24V	230mA	5W	220uF

ACE10W_VM SERIES

FEATURES

ACE10W_VM series is a 10W Smaller(46.08*25.78*21.7mm) AC-DC module power supply adopting range : 85-305VAC. The series has extremely low no-load power consumption below 0.1W. High efficiency up to 83% to reduce power loss.

The series cost-effective, high reliability, operates from -40°C to 85°C. A variety of appearance sizes are available for easy installation and use.

These converters offer excellent EMC performance and meet international standards , ready to be soldered onto the PCB boards of Industrial design, household appliances, communication equipment, testing instruments and other electronic instruments.

CE UK CA RoHS 



WARRANTY



MODEL INFORMATION :

Model No.	DC Voltage	Rated Current	Rated Power	Max. Capacitive Load
ACE10W-03VM	3V	2500mA	8.25W	6600uF
ACE10W-05VM	5V	2000mA	10W	5000uF
ACE10W-12VM	12V	850mA	10W	2000uF
ACE10W-15VM	15V	670mA	10W	820uF
ACE10W-24VM	24V	420mA	10W	680uF

ACE15W_VM SERIES

FEATURES

ACE15W_VM series is super small size up to 1.87*1.06 inch, adopting the full range : 85-305VAC/100-430VDC input. The series has extremely low no-load power consumption, high efficiency to reduce power loss.

The series cost-effective, high reliability, operates from -40°C to +85°C. A variety of appearance sizes are available for easy installation and use.

These converters offer excellent EMC performance and meet international standards , they are widely used in areas of industrial design, household appliances, communications, testing instruments.

CE UK CA RoHS 



WARRANTY



MODEL INFORMATION :

Model No.	DC Voltage	Rated Current	Rated Power	Max. Capacitive Load
ACE15W-03VM	3V	4000mA	13.2W	6600uF
ACE15W-05VM	5V	3000mA	15W	5000uF
ACE15W-09VM	9V	1670mA	15W	3000uF
ACE15W-12VM	12V	1250mA	15W	2000uF
ACE15W-15VM	15V	1000mA	15W	1500uF
ACE15W-24VM	24V	625mA	15W	680uF

ACE20W_V SERIES

FEATURES

ACE20W_VM series is a 20W Smaller (52.5*27.2*24mm) AC-DC module power supply adopting the full range : 85-305VAC input. The series has extremely low no-load power consumption below 0.1W. High efficiency up to 85% to reduce power loss.

The series cost-effective, high reliability, operates from -40°C to +85°C. A variety of appearance sizes are available for easy installation and use.

These converters offer excellent EMC performance and meet international standards , ready to be soldered onto the PCB boards of Industrial design, household appliances, communication equipment, testing instruments and other electronic instruments.

CE UK CA RoHS 



MODEL INFORMATION :

Model No.	DC Voltage	Rated Current	Rated Power	Max. Capacitive Load
ACE20W-03VM	3.3V	4500mA	15W	8000uF
ACE20W-05VM	5V	4000mA	20W	8000uF
ACE20W-12VM	12V	1800mA	20W	4000uF
ACE20W-15VM	15V	1400mA	20W	3000uF
ACE20W-24VM	24V	900mA	20W	800uF

ACE30W_VM SERIES

FEATURES

ACE30W_VM series is a 30W Smaller (69.5*39*24mm) AC-DC module power supply adopting the full range : 85-305VAC input. The series has extremely low no-load power consumption below 0.1W. High efficiency up to 90% to reduce power loss.

The series cost-effective, high reliability, operates from -40°C to +85°C. A variety of appearance sizes are available for easy installation and use.

These converters offer excellent EMC performance and meet international standards , ready to be soldered onto the PCB boards of Industrial design, household appliances, communication equipment, testing instruments and other electronic instruments.

CE UK CA RoHS 



WARRANTY



MODEL INFORMATION :

Model No.	DC Voltage	Rated Current	Rated Power	Max. Capacitive Load
ACE30W-05VM	5V	6000mA	30W	6000uF
ACE30W-12VM	12V	2500mA	30W	4400uF
ACE30W-15VM	15V	2000mA	30W	3300uF
ACE30W-24VM	24V	1250mA	30W	700uF
ACE30W-48VM	48V	630mA	30W	470uF

ACE45W_VM SERIES

FEATURES

ACE45W_VM series is a 45W Smaller (87*52*30mm) AC-DC module power supply adopting the full range : 85-305VAC input. The series has extremely low no-load power consumption below 0.15W. High efficiency up to 90.5% to reduce power loss.

The series cost-effective, high reliability, operates from -40°C to +85°C. A variety of appearance sizes are available for easy installation and use.

These converters offer excellent EMC performance and meet international standards , ready to be soldered onto the PCB boards of Industrial design, household appliances, communication equipment, testing instruments and other electronic instruments.

CE UK CA RoHS 



WARRANTY

MODEL INFORMATION :

Model No.	DC Voltage	Rated Current	Rated Power	Max. Capacitive Load
ACE45W-05VM	5V	8000mA	40W	6000uF
ACE45W-12VM	12V	3800mA	45W	4400uF
ACE45W-15VM	15V	3000mA	45W	3300uF
ACE45W-24VM	24V	1900mA	45W	1500uF
ACE45W-48VM	48V	940mA	45W	470uF

ACE60W_VM SERIES

FEATURES

ACE60W_VM series is a 60W Smaller (87*52*30mm) AC-DC module power supply adopting the full range : 85-305VAC input. The series has extremely low no-load power consumption below 0.15W. High efficiency up to 91% to reduce power loss.

The series cost-effective, high reliability, operates from -40°C to +85°C. A variety of appearance sizes are available for easy installation and use.

These converters offer excellent EMC performance and meet international standards , ready to be soldered onto the PCB boards of Industrial design, household appliances, communication equipment, testing instruments and other electronic instruments.

CE UK CA RoHS 



WARRANTY



MODEL INFORMATION :

Model No.	DC Voltage	Rated Current	Rated Power	Max. Capacitive Load
ACE60W-05VM	5V	10000mA	50W	20000uF
ACE60W-12VM	12V	5000mA	60W	8000uF
ACE60W-15VM	15V	4000mA	60W	5000uF
ACE60W-24VM	24V	2500mA	60W	4200uF
ACE60W-48VM	48V	1250mA	60W	800uF

ACE90W_VM SERIES

FEATURES

ACE90W_VM series is a 90W Smaller (87*52*30mm) AC-DC module power supply adopting the full range : 85-305VAC input. The series has extremely low no-load power consumption below 0.3W. High efficiency up to 93% to reduce power loss.

The series cost-effective, high reliability, operates from -40°C to +85°C. A variety of appearance sizes are available for easy installation and use.

These converters offer excellent EMC performance and meet international standards , ready to be soldered onto the PCB boards of Industrial design, household appliances, communication equipment, testing instruments and other electronic instruments.

CE UK CA RoHS 



WARRANTY



MODEL INFORMATION :

Model No.	DC Voltage	Rated Current	Rated Power	Max. Capacitive Load
ACE90W-12VM	12V	6700mA	80W	6800uF
ACE90W-15VM	15V	5670mA	85W	4500uF
ACE90W-24VM	24V	3750mA	90W	3000uF
ACE90W-48VM	48V	1880mA	90W	470uF

ACE10W_VRC SERIES

FEATURES

ACE10W_VRC series is a 10W AC-DC module power supply adopting range : 85-305VAC. The series has extremely low no-load power consumption below 0.1W. High efficiency up to 83% to reduce power loss.

The series cost-effective, high reliability, operates from -40°C to +85°C. A variety of appearance sizes are available for easy installation and use.

These converters offer excellent EMC performance and meet international standards , ready to be soldered onto the PCB boards of Industrial design, household appliances, communication equipment, testing instruments and other electronic instruments.

CE UK CA RoHS 



WARRANTY



MODEL INFORMATION :

Model No.	DC Voltage	Rated Current	Rated Power	Max. Capacitive Load
ACE10W-03VRC	3.3V	2500mA	8.3W	10000uF
ACE10W-05VRC	5V	2000mA	10W	8000uF
ACE10W-12VRC	12V	840mA	10W	1500uF
ACE10W-15VRC	15V	670mA	10W	1000uF
ACE10W-24VRC	24V	420mA	10W	470uF

ACE20W_VRC SERIES

FEATURES

ACE20W_VRC series is a 20W AC-DC module power supply adopting the full range : 85-305VAC input. The series has extremely low no-load power consumption below 0.1W. High efficiency up to 85% to reduce power loss.

The series cost-effective, high reliability, operates from -40°C to +85°C. A variety of appearance sizes are available for easy installation and use.

These converters offer excellent EMC performance and meet international standards , ready to be soldered onto the PCB boards of Industrial design, household appliances, communication equipment, testing instruments and other electronic instruments.

CE UK CA RoHS 



MODEL INFORMATION :

Model No.	DC Voltage	Rated Current	Rated Power	Max. Capacitive Load
ACE20W-03VRC	3.3V	2500mA	13.2W	8000uF
ACE20W-05VRC	05V	4000mA	20W	8000uF
ACE20W-09VRC	09V	2222mA	20W	5400uF
ACE20W-12VRC	12V	1670mA	20W	4000uF
ACE20W-15VRC	15V	1333mA	20W	3000uF
ACE20W-24VRC	24V	830mA	20W	1000uF

ACE30W_VMST(D) SERIES

FEATURES

ACE30W_VMST(D) series is a 30W miniature AC-DC module-type power supply, ready to be used as a panel mount or DIN Rail Mount in various kinds of electronic instruments or industrial automation equipments. This product allows the universal input voltage range of 85~305VAC.

The series cost-effective, high reliability, operates from -40°C to +85°C. A variety of appearance sizes are available for easy installation and use.

These converters offer excellent EMC performance and meet international standards, ready to be used as a panel mount or DIN Rail Mount for Industrial design, household appliances, communication equipment, testing instruments and other electronic instruments.

CE UK CA RoHS 



WARRANTY



MODEL INFORMATION :

Model No.	DC Voltage	Rated Current	Rated Power	Max. Capacitive Load
ACE30W-05VMST(D)	5V	6000mA	30W	6000uF
ACE30W-12VMST(D)	12V	2500mA	30W	4400uF
ACE30W-15VMST(D)	15V	2000mA	30W	3300uF
ACE30W-24VMST(D)	24V	1250mA	30W	700uF
ACE30W-48VMST(D)	48V	630mA	30W	470uF

Note : Add Suffix "D" for Din Mount

ACE45W_VMST(D) SERIES

FEATURES

ACE45W_VMST(D) series is a 45W miniature AC-DC module-type power supply, ready to be used as a panel mount or DIN Rail Mount of various kinds of electronic instruments or industrial automation equipments. This product allows the universal input voltage range of 85~305VAC.

The series cost-effective, high reliability, operates from -40°C to +85°C. A variety of appearance sizes are available for easy installation and use.

These converters offer excellent EMC performance and meet international standards, ready to be used as a panel mount or DIN Rail Mount for Industrial design, household appliances, communication equipment, testing instruments and other electronic instruments.



MODEL INFORMATION :

Model No.	DC Voltage	Rated Current	Rated Power	Max. Capacitive Load
ACE45W-05VMST(D)	5V	8000mA	40W	6000uF
ACE45W-12VMST(D)	12V	3800mA	45W	4400uF
ACE45W-15VMST(D)	15V	3000mA	45W	3300uF
ACE45W-24VMST(D)	24V	1900mA	45W	700uF
ACE45W-48VMST(D)	48V	940mA	45W	470uF

Note : Add Suffix "D" for Din Mount

ACE60W_VMST(D) SERIES

FEATURES

ACE60W_VMST(D) series is a 60W miniature AC-DC module-type power supply, ready to be used as a panel mount or DIN Rail Mount of various kinds of electronic instruments or industrial automation equipments. This product allows the universal input voltage range of 85~305VAC.

The series cost-effective, high reliability, operates from -40°C to +85°C. A variety of appearance sizes are available for easy installation and use.

These converters offer excellent EMC performance and meet international standards, ready to be used as a panel mount or DIN Rail Mount for Industrial design, household appliances, communication equipment, testing instruments and other electronic instruments.



MODEL INFORMATION :

Model No.	DC Voltage	Rated Current	Rated Power	Max. Capacitive Load
ACE60W-05VMST(D)	5V	10000mA	50W	20000uF
ACE60W-12VMST(D)	12V	5000mA	60W	8000uF
ACE60W-15VMST(D)	15V	4000mA	60W	5000uF
ACE60W-24VMST(D)	24V	2500mA	60W	4200uF
ACE60W-48VMST(D)	48V	1250mA	60W	800uF

Note : Add Suffix "D" for Din Mount

ACE90W_VMST(D) SERIES

FEATURES

ACE90W_VMST(D) series is a 90W miniature AC-DC module-type power supply, ready to be used as a panel mount or DIN Rail Mount of various kinds of electronic instruments or industrial automation equipments. This product allows the universal input voltage range of 85~305VAC.

The series cost-effective, high reliability, operates from -40°C to +85°C. A variety of appearance sizes are available for easy installation and use.

These converters offer excellent EMC performance and meet international standards, ready to be used as a panel mount or DIN Rail Mount for Industrial design, household appliances, communication equipment, testing instruments and other electronic instruments.

CE UK CA RoHS 



WARRANTY



MODEL INFORMATION :

Model No.	DC Voltage	Rated Current	Rated Power	Max. Capacitive Load
ACE90W-12VMST(D)	12V	6700mA	80W	6800uF
ACE90W-15VMST(D)	15V	5670mA	90W	4500uF
ACE90W-24VMST(D)	24V	3750mA	90W	3000uF
ACE90W-48VMST(D)	48V	1880mA	90W	470uF

Note : Add Suffix "D" for Din Mount

Contact Us

RAJSHREE ELECTRONICS & AUTOMATION INDIA PRIVATE LIMITED
NO.10/1, K.H.RANGANATHA LAYOUT COLONY,
MYSORE ROAD CROSS, BANGALORE-560039

info@rajshreeelectronics.com

www.rajshreeelectronics.com

P : +91 8660263372