

HXDM-20W SERIES



FEATURES

- Universal AC Input/ Full Range
- DC OK Signal Output
- Protection: Short Circuit/Overload/ Over Voltage
- Installation On DIN Rail TS-35/7.5 & 15
- DC Output Voltage Adjustable
- 4 Years Warranty
- Works on DC Input (120~370VDC) also

IS 13252 (Part 1) 2010/
IEC 60950-1:2005
R-62006220
www.bis.gov.in



HXDM-20 is a slim line power family are designed with slim plastic housing and for full range AC input from 90VAC To 264VAC. The series are single phase PSU, providing DC OK relay contact and adjustable DC output voltage. They have high efficiency and operate in wide temperature range. The series can widely used for industrial automation & control systems, varied equipments etc.

SELECTION GUIDE

Product Model	DC Voltage	Rated Current(max)	Rated Power
HXDM-20-05	5V	3A	15W
HXDM-20-12	12V	1.67A	20W
HXDM-20-15	15V	1.34A	20W
HXDM-20-24	24V	1A	24W

INPUT CHARACTERISTICS

Parameter	Units	Model
VOLTAGE RANGE	90-264VAC/120-370VDC	
FREQUENCY RANGE	47~63Hz	
INRUSH CURRENT(TYP.)	20A/115VAC cold start	
	40A/230VAC cold start	
AC CURRENT(TYP.)	0.55A/115VAC	
	0.35A/230VAC	
LEAKAGE CURRENT	<1mA/240VAC	
EFFICIENCY	77%	HXDM-20-05
	81%	HXDM-20-12
	81%	HXDM-20-15
	84%	HXDM-20-24

OUTPUT CHARACTERISTICS

Parameter	Units	Model
RIPPLE & NOISE(MAX.)	80mVp-p	HXDM-20-05
	120mVp-p	HXDM-20-12
	120mVp-p	HXDM-20-15
	150mVp-p	HXDM-20-24
VOLTAGE ADJ. RANGE	4.75~5.5V	HXDM-20-05
	10.8 ~ 13.2V	HXDM-20-12
	13.5 ~ 16.5V	HXDM-20-15
	21.6 ~ 26.4V	HXDM-20-24

Parameter	Units
VOLTAGE TOLERANCE	±2.0%
LINE REGULATION	±1.0%
LOAD REGULATION	±5.0%
SETUP, RISE TIME	500ms, 30ms/230VAC at full load
	1000ms, 30ms/115VAC at full load
HOLD UP TIME (TYP.)	50ms/230VAC at full load
	20ms/115VAC at full load

PROTECTION

Parameter	Units	Model
OVER LOAD	Above 105% Rated Output Power	
	Protection type: Hiccup Mode- recovers automatically after fault condition is removed	
OVER VOLTAGE	5V:5.75~ 6.75V	HXDM-20-05
	12V:13.8 ~ 16.2V	HXDM-20-12
	15V:17.25 ~ 20.25V	HXDM-20-15
	24V:27.6 ~ 32.4V	HXDM-20-24
	Protection type : Shut down o/p voltage, re-power on to recover	

Parameter	Units
OPERATING TEMPERATURE	-20°C to 70°C(Refer to "Derating Curve")
STORAGE TEMP	-40°C to 85°C
STORAGE HUMIDITY	10 ~ 95% RH
WORKING HUMIDITY	20% ~ 90% RH Non-Condensing

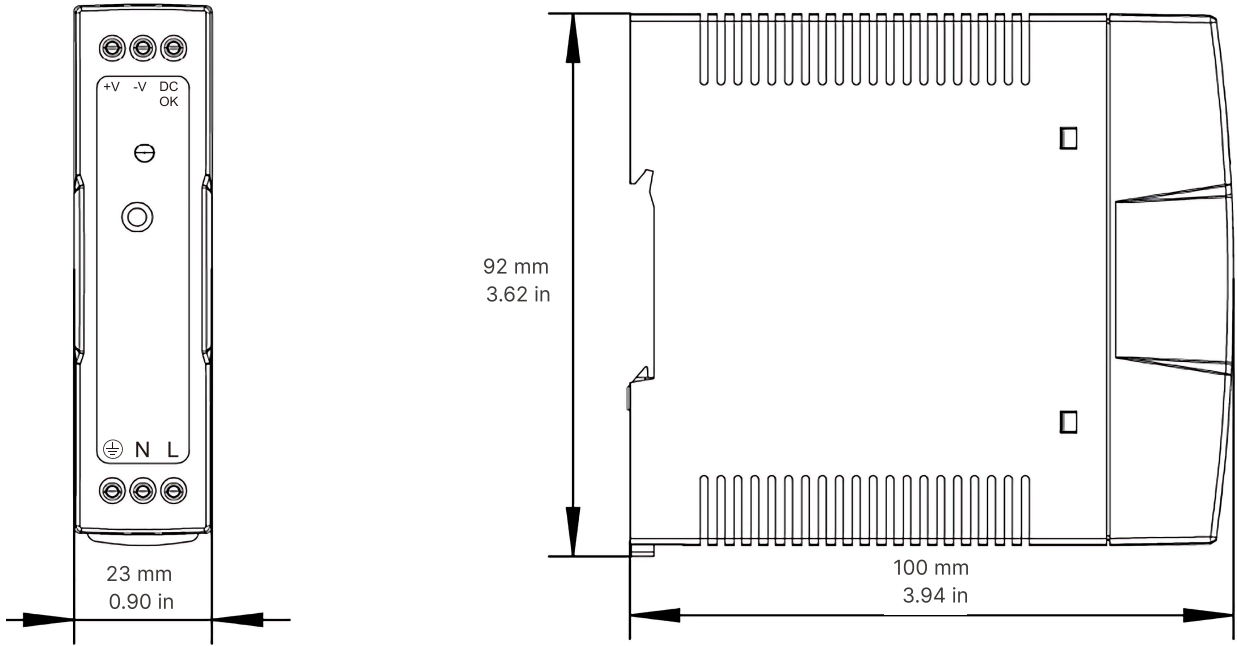
SAFETY & EMC

Parameter	Units
SAFETY REGULATIONS	BS/EN62368-1 approved
WITHSTAND VOLTAGE	I/P-O/P:3KVAC I/P-FG:2KVAC O/P-FG:0.5KVAC
ISOLATION RESISTANCE	I/P-O/P, I/P-FG, O/P-FG:100M Ohms / 500VDC / 25°C/ 70% RH
EMC EMISSION	BS EN/EN 55032 class B, BS EN/EN IEC 61000-3-2,3
EMC IMMUNITY	BS EN/EN61000-4-2,3,4,5,6,8,11

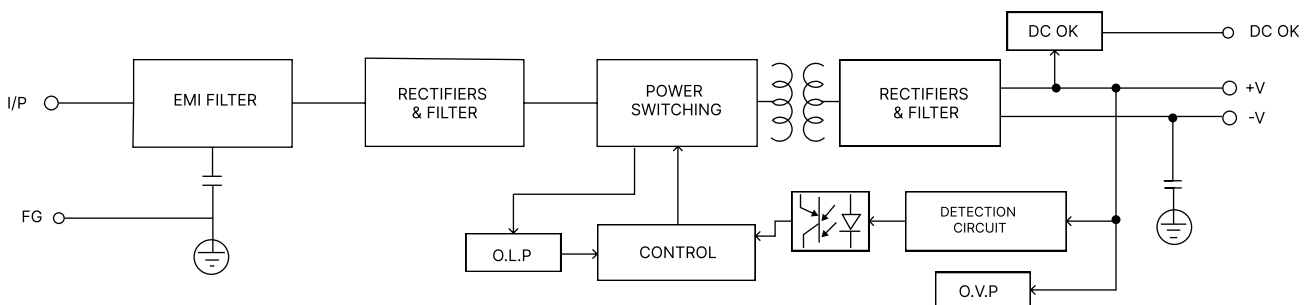
DIMENSIONS, WEIGHT & PACKING

Parameter	Units
SIZE:	23*100*92mm (LxWxH)
WEIGHT:	140g
CARTON SIZE:	54 × 30 × 24 CM
	21.26 × 11.81 × 9.45 in
MASTER CARTON QUANTITIES	100pcs / Carton

DIMENSIONS AND INSTALLATION

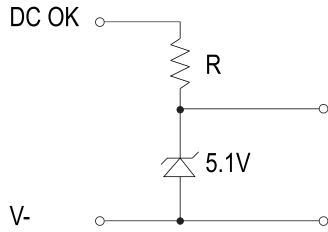


FUNCTIONAL DIAGRAM



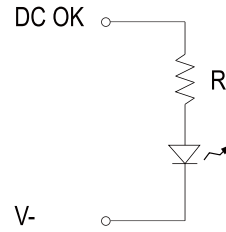
APPLICATION OF DC OK ACTIVE SIGNAL

(a) 5V signal



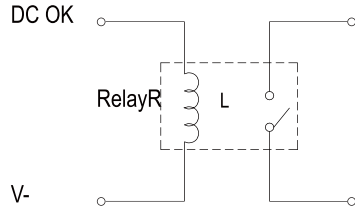
Model	R
5V	$\cong 200\Omega$
12V	$\cong 1.5K\Omega$
15V	$\cong 2K\Omega$
24V	$\cong 3.9K\Omega$

(b) LED



Model	R
5V	$\cong 1K\Omega$
12V	$\cong 2.4K\Omega$
15V	$\cong 3K\Omega$
24V	$\cong 4.7K\Omega$

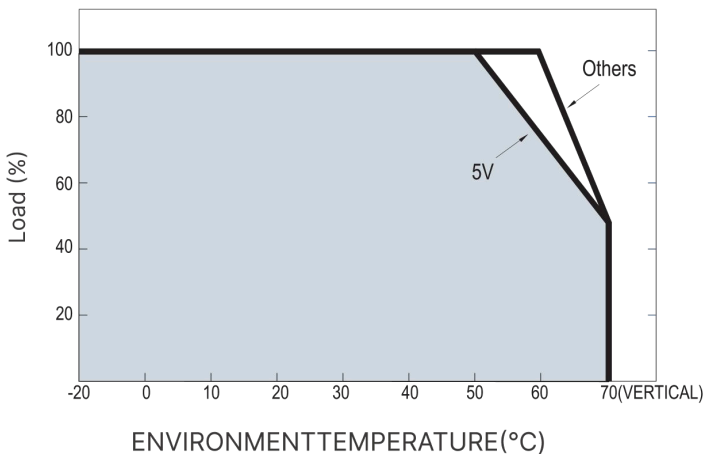
(c) Relay



Model	RL
5V	$\cong 120\Omega$
12V	$\cong 700\Omega$
15V	$\cong 700\Omega$
24V	$\cong 1.2K\Omega$

GRAPHS

APPLICATION OF DC OK ACTIVE SIGNAL



OUTPUT DERATING VS INPUT VOLTAGE CURVES

